



Public Safety Brief

August 2015



Special Dates & Information:

August 4, 2015

National Night Out
Granville Gude Park
6 p.m to 9p.m

August 20, 2015

Train Station
Town Hall Meeting
Council Chambers
6 p.m. to 8p.m.

City of Laurel

Municipal Center

8103 Sandy Spring Road

Laurel, Maryland 20707

City website:

www.laurel.md.us

Phone: 301-725-5300

Laurel Police Department:

Emergency: Call 911

Non-Emergency: 301-498-0092

**Laurel Volunteer Fire
Department website:**

www.laurelvfd.org

Emergency Services Director Marty Flemion

10 Back to School Safety Tips

With fall right around the corner, thousands of students are preparing to return to college or start their freshman year. The beginning of the school year also means that many students will be moving into new dorms or off-campus apartments. As exciting as starting a new school year may be, it is important that students always remember to keep themselves safe. Use the following back to school safety tips to make moving and returning to school a seamlessly safe process.



Moving to College tips:

- If you are hiring a moving company, first research the company to ensure that they are reputable.
- Keep an emergency kit on hand during your move. Also buy a kit to keep in your home.
- When moving you will have to make multiple trips to and from your car or moving vehicle. Lock all vehicles that are unattended. Keep all valuables out of plain sight and frequently check on the vehicles.
- Inspect your new home for carbon monoxide detectors and smoke alarms. Be sure to test each alarm to ensure that they work properly.
- Learn the emergency evacuation plan and routes for your new home
- Contact the post office prior to your move to have them change your address

Special Dates & Information:

August 4th 2015

National Night Out
Granville Gude Park
6 p.m. to 9 p.m.

August 20, 2015

Train Station
Town Hall Meeting
Council Chambers
6 p.m. to 8p.m.

City of Laurel

Municipal Center

8103 Sandy Spring Road

Laurel, Maryland 20707

City website:

www.laurel.md.us

Phone: 301-725-5300

Laurel Police Department:

Emergency: Call 911

Non-Emergency: 301-498-0092

**Laurel Volunteer Fire
Department website:**

www.laurelvfd.org

**Laurel Volunteer Rescue
Squad website:**

www.laurelrescue.org

Back to Campus Tips:

- It is important that you know and trust the people that you will be living with. Get acquainted with your new roommates and exchange numbers with them. Also let them know who your emergency contacts are.
- Share your class schedule with your family and friends so that they can locate you in case of an emergency
- Consider getting a spare key. Immediately report all lost keys to your landlord or resident advisor.
- New students should familiarize themselves with the campus. Learn where emergency stations are located and save all emergency contact numbers.

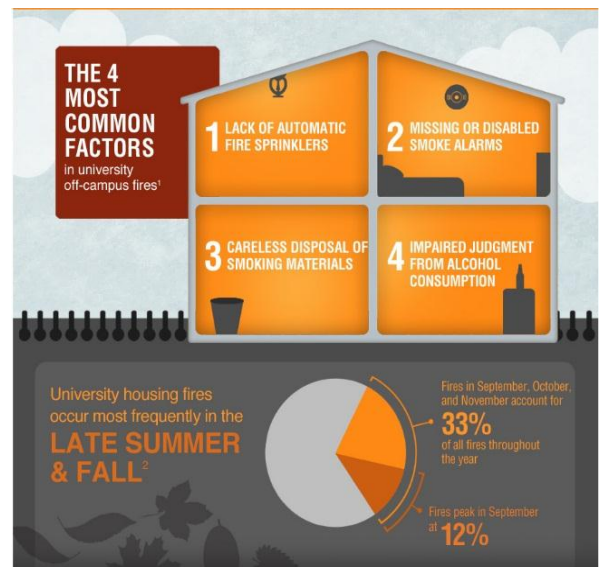
Fire Marshal David Cope

College Fire Safety

College Students living away from home should take a few minutes to make sure they are living in a fire-safe environment. Educating students on what they can do to stay safe during the school year is important and often overlooked.

Safety Tips

- Look for fully sprinkled
- housing when choosing a dorm or off-campus housing
- Make sure you can hear the building alarm system when you are in your dorm room
- If you live in a dormitory, make sure your sleeping room has a smoke alarm, or your dormitory suite has a smoke alarm in each living areas as well



Special Dates & Information:

August 4th 2015

National Night Out
Granville Gude Park
6 p.m. to 9 p.m.

August 20, 2015

Train Station
Town Hall Meeting
Council Chambers
6 p.m. to 8p.m.

City of Laurel

Municipal Center

8103 Sandy Spring Road
Laurel, Maryland 20707

City website:

www.laurel.md.us

Phone: 301-725-5300

Laurel Police Department:

Emergency: Call 911

Non-Emergency: 301-498-0092

Laurel Volunteer Fire Department website:

www.laurelvfd.org

Laurel Volunteer Rescue Squad website:

www.laurelrescue.org

- If you live in an apartment or house, make sure smoke alarms are installed in each sleeping room, outside every sleeping area, and on each level of the apartment unit or house. For the best protection, all smoke alarms in the apartment unit or house should be interconnected so that when one sounds, they all sound
- Test all smoke alarms at least monthly
- Never remove batteries or disable the alarm
- Learn your building's evacuation plan and practice as drills as if they were the real thing
- If you live on campus, have a fire escape plan with two ways out of every room
- When the smoke alarm or fire alarm sounds, get out of the building quickly and stay out.
- Stay in the kitchen when cooking
- Cook only when you are alert, not sleepy or drowsy from medicine or alcohol
- Check with your local fire department for any restrictions before using a barbeque grill, fire pit
- Check your school's rules before using electrical appliances in your room

CANDLE Care

Burn candles only if the school permits their use. A candle is an open flame and should be placed away from anything that can burn. Never leave a



candle unattended. Blow it out when you leave the room or go to sleep.

Smoking Sense

If you smoke, smoke outside and only where it is permitted. Use sturdy, deep, not-tip ashtrays. Don't smoke in bed or when you've been drinking or are drowsy.



www.nfpa.org/education

FACT



» Fires in dormitories are more common during the evening hours, between 5-11pm and on weekends

» Roughly five out of six fires in dormitories are started by cooking